

# WORM DRIVE & SCREW CLAMPS



## Mini Screw

Mini Screw clamps are particularly suitable for soft hoses and small diameters. The clamp forms a complete circle and has smooth edges.

PERFORMANCE	Strength	■ ■
	Temperature	■ ■ ■ ■ ■ ■
	Speed	■ ■ ■ ■
	Weathering	■ ■ ■ ■
	Chemical	■ ■ ■ ■
Dynamic Range	■ ■ ■ ■	

## Applications

- Automotive
- White Goods
- Gas Equipment
- General Industry

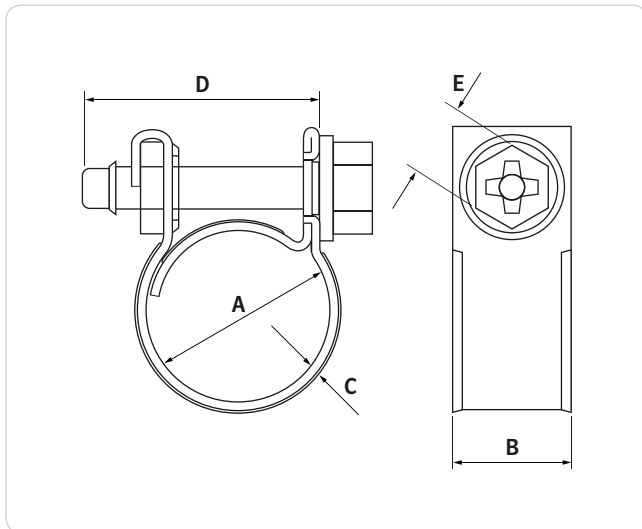
**Materials** – see section 10.3

■ **W1** Zinc Plated Steel

On Request

■ **W4** 304 SS

Weathering	■ ■ ■ ■
Chemical	■ ■ ■ ■



HCL Part No	Diameter Range (A) mm	Band Width (B) mm	Band Thickness (C) mm	Hex Screw Length (D) mm	Hex Screw A/F (E) mm	Max Torque Nm	Box Quantity
MC-8	7 – 9	9.0	0.6	22.0	7.0	1.2	2000
MC-9	8 – 10						
MC-10	9 – 11						
MC-11	10 – 12						
MC-12	11 – 13						
MC-13	12 – 14						
MC-14	13 – 15						
MC-15	14 – 16						
MC-16	15 – 17						
MC-17	16 – 18						
MC-18	17 – 19	2500					
MC-19	18 – 20						
MC-20	19 – 21						
MC-25-IMQ*	24 – 25						

All weights, dimensions & quantities are subject to a 2.5% tolerance.  
To add material selection to the HCL Part No: for W1, add "W1".  
Other sizes up to 84mm diameter available on request.  
\*IMQ code = Crosshead screw.

**Installation Tools** – see section 9.1



MT-D-01

MT-AD-01

MT-TD-01