

# HEAVY DUTY CLAMPS



## T-Bolt

HCL's T-Bolt clamps provide a leak-proof, high strength, durable and corrosion resistant clamping solution. Commonly found in the US market, they are regarded as the ideal choice for medium and heavy duty applications.

PERFORMANCE	Strength	
	Temperature	
	Speed	
	Weathering	
	Chemical	
	Dynamic Range	

### Applications

- Automotive
- Irrigation
- Ducting
- Medical Industry
- Industrial Cleaners
- Pharmaceutical

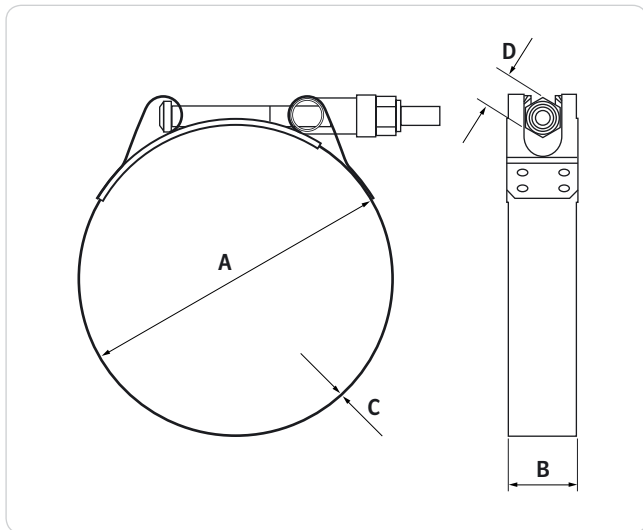
**Materials** – see section 10.3

- **W2** Screw – Zinc Plated Steel  
Band & Housing – 301 SS

On Request

- **W4** 304 SS

Weathering	
Chemical	



HCL Part No	Diameter Range (A) mm	Band Width (B) mm	Band Thickness (C) mm	Nut A/F (D) mm	Max Torque Nm	Box Quantity
TB-34	34 – 40	19.0	0.6	11.0	8.5	100
TB-40	40 – 46					
TB-43	43 – 49					
TB-46	46 – 52					
TB-51	51 – 57					
TB-58	58 – 65					
TB-64	64 – 72					
TB-70	70 – 78					
TB-76	76 – 84					
TB-83	83 – 91					
TB-89	89 – 97					
TB-95	95 – 103					
TB-102	102 – 110					
TB-108	108 – 116					
TB-114	114 – 122					
TB-121	121 – 129					
TB-127	127 – 135					
TB-133	133 – 141					
TB-140	140 – 148					
TB-146	146 – 154					
TB-152	152 – 160					
TB-159	159 – 167					
TB-165	165 – 173					
TB-171	171 – 179					
TB-178	178 – 186					
TB-184	184 – 192					
TB-191	191 – 199					
TB-197	197 – 205					
TB-203	203 – 211					
						50

All weights, dimensions & quantities are subject to a 2.5% tolerance.  
To add material selection to the HCL Part No: for W2, add "W2".